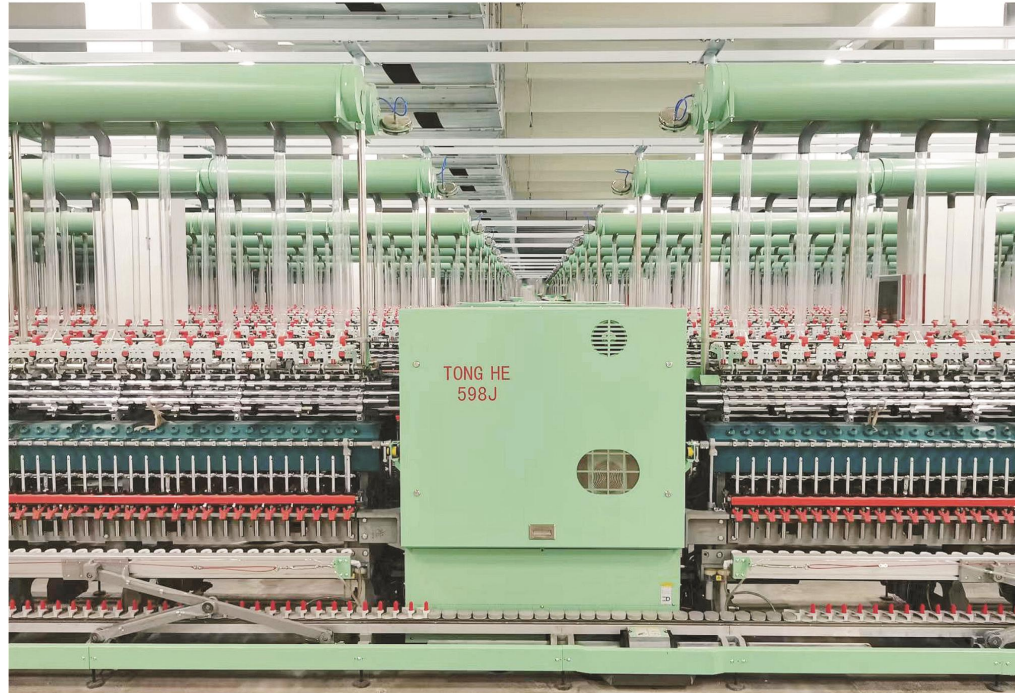


TONG HE



TH598 系列集聚纺细纱机

TH598 SERIES COMPACT RING SPINNING FRAME

高速 *HIGH SPEED*

高产 *HIGH YIELD*

高效 *HIGH EFFICIENCY*



TH598 系列集聚纺细纱机

TH598 SERIES COMPACT SPINNING FRAME

专业生产高品质纱线

TONG HE

SPECIALIZING IN THE PRODUCTION OF HIGH-QUALITY YARN

| 内容 | CONTENT |
|------------|--|
| P4 高速高效运转 | P4 HIGH SPEED AND HIGH EFFICIENT OPERATION |
| P7 绿色节能降耗 | P7 GREEN ENERGY CONSERVATION AND CONSUMPTION REDUCTION |
| P8 智能纺纱系统 | P8 INTELLIGENT SPINNING SYSTEM |
| P9 便捷灵活操作 | P9 CONVENIENT AND FLEXIBLE OPERATION |
| P11 应用功能拓展 | P11 APPLICATION FUNCTION EXPANSION |
| P12 精密生产智造 | P12 PRECISION PRODUCTION INTELLIGENT MANUFACTURING |
| P17 主要技术参数 | P17 MAIN TECHNICAL PARAMETERS |
| P18 主要尺寸参数 | P18 MAIN DIMENSIONAL PARAMETERS |

同和公司是国内唯一一家生产粗纱机、细纱机、粗细联合成套装备的厂家。

同和公司致力于为客户提供纺纱全流程成套、大数据、智能化解决方案。

同和公司致力于全球纺机、纺机牵伸专件的研发、生产和销售。

同和公司致力于全球纺机，是唯一专业、专心、专注、专爱的企业。

Tonghe company is the only manufacturer in China to produce roving, ring spinning frame and BTS.

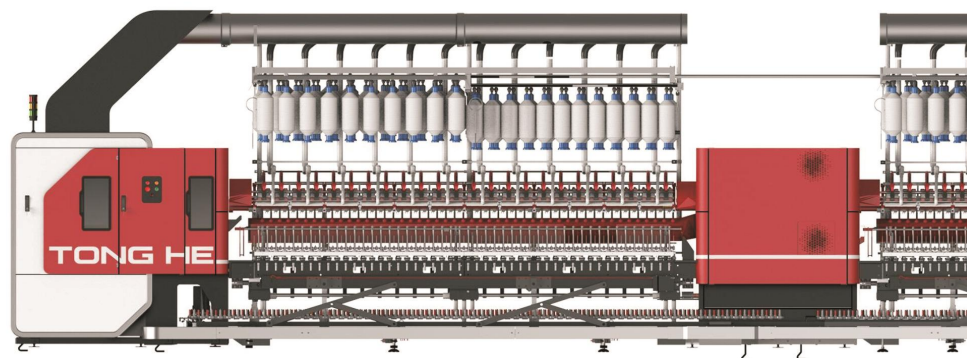
Tonghe company is committed to providing customers with spinning complete sets of the whole process, big data, intelligent solutions.

Tonghe company is committed to the development, production, sales of the global textile machinery and textile machinery drafting parts.

Tonghe company is committed to the global textile machinery, is the only professional, dedicated, concentration and devoted company.

TH598 系列集聚纺细纱机

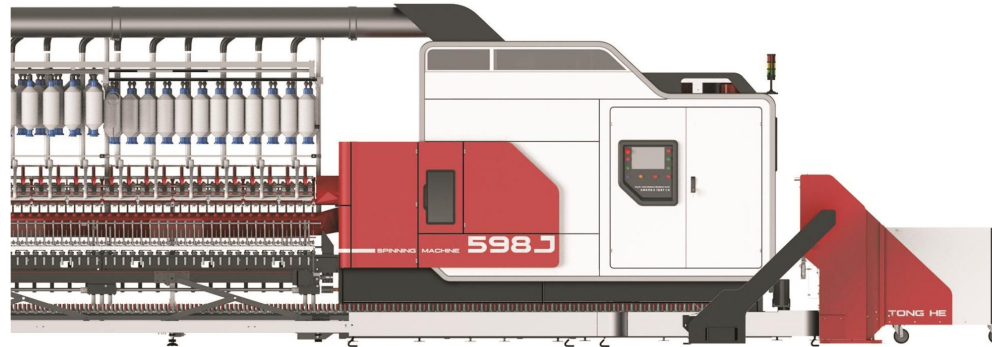
TH598 SERIES COMPACT RING SPINNING FRAME



TH598 系列集聚纺细纱机是我司根据全球客户的需求及环锭纺纱技术发展趋势而推出的全新高端机型。自 2011 年投放市场，在国内外知名用户历经考验，如安徽华茂、山东魏桥、德州华源、河南舞钢、江苏悦达、新疆昌润、湖北德永盛国外孟加拉银线集团、俄罗斯罗德尼基等，深受用户青睐。整机采用模块化设计理念，具备全电子牵伸、积极式电子升降、钢带式集体落纱、车头车尾两端工艺吸棉等全新技术。TH598 系列集聚纺细纱机适纺范围广，从超低支纱到超高支纱，从纺棉、毛、麻、化纤、色纺、混纺、差别化纤维、花式纱线等均有突出表现。该机型最长锭数可达 1824 锭，可满足国内外客户高质、高速、高效、智能化的纺纱需求。

TH598 系列集聚纺细纱机

TH598 SERIES COMPACT RING SPINNING FRAME



TH598 series compact ring spinning frame is a brand-new high-end model launched by TONGHE based on global customers' needs and the development trend of ring spinning technology. Since its launch in 2011, it has been proved by well-known customers both domestically and internationally, such as Anhui Huamao, Shandong Weiqiao, Dezhou Huayuan, Henan Wugang, Jiangsu Yueda, Hubei Deyongsheng, Bangladesh Silver Line Group, Russia Rodniki Spinning, etc., and is highly favored by them. The entire machine adopts a modular design concept, with new technologies such as fully E-DRAFT, active positive lifting, steel belt type auto doffing, and new suction system from both ends. TH598 series compact spinning frame has a wide range of spinning applications, ranging from ultra-low count yarn to high count yarn, from cotton, chemical fibers, linen, m 4ange, blended to differential fibers, all of which have excellent performance. The max spindles could reach 1824S, which could meet the high-quality, high-speed, highly efficient, and intelligent spinning needs of global customers.

TH598 系列集聚纺细纱机

TH598 SERIES COMPACT SPINNING FRAME

高速高效运转

TONG HE

HIGH SPEED AND EFFICIENT OPERATION

● 整机模块化装配 **Modular assembly**

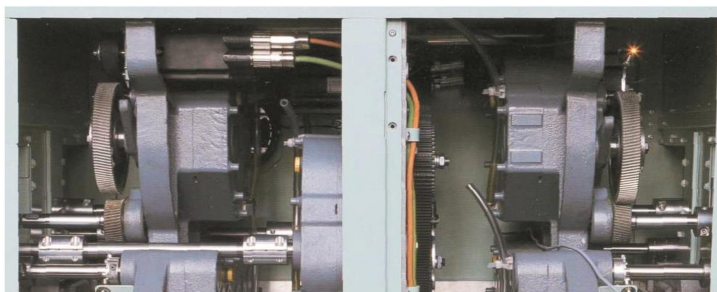
机架钢性好
Good rigidity of the rack
稳定性强
Strong stability
安装快捷
Quick installation
长期高速稳定运行
Long term high-speed and stable operation



● 全电子牵伸 **Fully E-Draft system**

动力传递效率高，润滑保养周期长，三列罗拉由伺服独立驱动，可实现罗拉无级调速，牵伸倍数无级变换，可实现快速工艺切换，操作方便，有效提升生产效率。

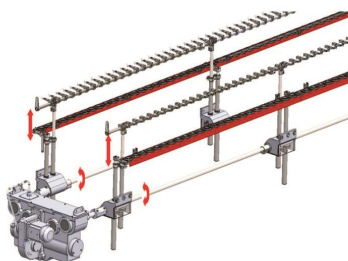
High power transmission efficiency, long lubrication and maintenance cycle. Three lines of bottom rollers are independently driven by servo system, which can achieve stepless speed regulation of the bottom rollers and stepless change of draft multiple. It can achieve rapid process switching, convenient operation, and effectively improve production efficiency.



● 积极式电子升降 Positive E-lifting

伺服驱动钢领板导纱板，永久确保钢领板无易位，确保钢领板平稳无顿挫，确保管纱成型一致性好，管纱成形适于高速络筒，降低纺纱千锭时断头。

Servo driven ring rail and guide rail, permanently ensures that the ring rail without translocation, ensures that the ring rail is stable without setbacks, and ensures good consistency in yarn cop forming. The yarn cop is suitable for high-speed winding, reducing yarn breakage during spinning.



● 钢带式自动落纱装置 Steel belt type auto doffing system



采用钢带与托盘相结合的输送结构，集落停车时间缩短为 2 分钟。

Adopting a conveying structure that combines steel belts and peg trays, the doffing time is reduced to ≤ 2 minutes.

TH598 系列集聚纺细纱机

TH598 SERIES COMPACT SPINNING FRAME

高速高效运转

TONG HE

HIGH SPEED AND EFFICIENT OPERATION

- 全自动理管装置，理管速度最快可达 65 个/分钟。

Fully automatic bobbin sorting box, with a sorting speed of up to 65 pcs per minute.



- 高精密零件 **High precision parts**

(1) 铝合金滚盘：精密压铸成形，进口设备精密加工，不易磨损，老化，变形，为高速运转提供有利条件。

Aluminum alloy pulley: precision die-casting forming, precision processing with imported equipment, resistant to wear, aging, and deformation, providing favorable conditions for high-speed operation.

(2) 合金钢主轴：搭接方式连接，为高速运转提供有利条件。

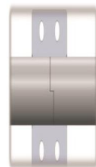
Alloy steel main shaft: connected by overlapping method, providing favorable conditions for high-speed operation.

(3) 铝合金整体式罗拉座，精密压铸成形，进口设备精密加工，刚性好，精度高，不积花，稳定性好，有利于高速运行。

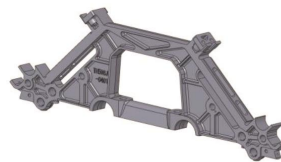
Aluminum alloy integral roller stand: precision die-casting forming, imported equipment precision processing, good rigidity, high precision, no accumulation of fibers, good stability, and conducive to high-speed operation.



(1)



(2)



(3)

- 全系标配全新二级能效（IE4）高效纺织电机。
Equipped with a new Level 2 Energy Efficiency (IE4) high-efficiency textile motor as standard.

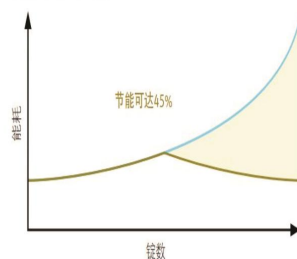
- 双风道节能型吸棉风管结构，向上凸起式抽吸孔，有效降低风道内的风阻，减少内部的嵌花挂花现象，使吸棉风管负压稳定，降低能耗，提高细纱机整体效率。

The dual duct energy-saving suction structure: The upward raised suction hole can effectively reduce the wind resistance in the air duct, reduce the internal inseting phenomenon, make the negative pressure of the suction duct stable, reduce energy consumption, and improve the overall efficiency of the spinning frame.



- 采用头、尾两端工艺吸棉技术，与单侧吸风系统相比，双侧吸风能够以更低的能耗输送相同的风量，可优化整个吸棉负压系统的空气动力学性能。1200 锭长车能耗降低 2 千瓦/小时以上。

有助于节能的双侧吸风



— 单侧吸风的能耗
— 双侧吸风的能耗

With the new suction technology from both ends, compared to a single side suction system, the new type suction system can deliver the same air volume with lower energy consumption, which can optimize the aerodynamic performance of the entire suction negative pressure system.

- 采用高品质运动控制器，具有顶级处理能力，紧凑的设计结构，高度灵活的扩展能力。
Adopting high-quality motion controllers with top-notch processing power, compact design structure, and highly flexible extensibility.



- 利用单锭检测和粗纱自停功能持续监控纺纱生产过程。断头检测系统配合智能化系统可对运行条件进行优化，从而节约原料，避免皮辊绕纱，提高生产效率。
Continuously monitor the spinning production process with spindle monitoring system and R-stop device. The breakage detection system, combined with Tonghe intelligent spinning system, could optimize the operating conditions, thereby saving raw materials, avoiding top roller fibers winding, and improving production efficiency.
- 拥有速度优化功能，配合单锭检测功能的配合，保证了机器的最大效率。只需在操作界面上设定断头数量极限值，软件系统就会自动控制锭速，将机器控制在纺纱工艺设定的极限范围内运行。
Equipped with speed optimization function and combined with spindle monitoring system function, it ensures the maximum efficiency of the machine. Just set the limit value of the number of yarn breakage on the operation interface, and the software system will automatically control the spindle speed, and make sure the machine running within the limit range set by the spinning process.
- 利用物联网、互联网技术对纺纱设备的健康状况监测，实现线上的状态感知，健康评估、能耗监测、异常检测，最终实现设备预测性维护，提高设备利用率。
Utilizing the Internet of Things and internet technology to monitor the health status of ring frames, achieving online state perception, health assessment, energy consumption monitoring, and anomaly detection, ultimately achieving predictive maintenance of ring frames and improving the utilization.

TH598 系列集聚纺细纱机

TH598 SERIES COMPACT SPINNING FRAME

便捷灵活操作

TONG HE

CONVENIENT AND FLEXIBLE OPERATION

- 人机操作界面简单，显示清晰，仅改变少量参数就可实现设备的调整。

The human-machine operation interface is very simple with very clear display, and ring frame adjustment could be achieved by changing only very few parameters.



- 全电子牵伸系统实现在机器显示屏上轻松调节纱线捻度和牵伸倍数等参数。无需变换齿轮或进行任何其他机械调节。减少挡车工工作量，提高生产效率。

Fully E-draft system enables easy adjustment of parameters such as yarn twist and drafting ratio on the operation interface. No need to change gears or make any other mechanical adjustments. This is very helpful to reduce the workload of the workers and improve production efficiency.

- 纺纱工艺参数可随时记录、存储、调取。

The spinning process parameters could be recorded, stored, and retrieved at any time.



TH598 系列集聚纺细纱机

TH598 SERIES COMPACT SPINNING FRAME

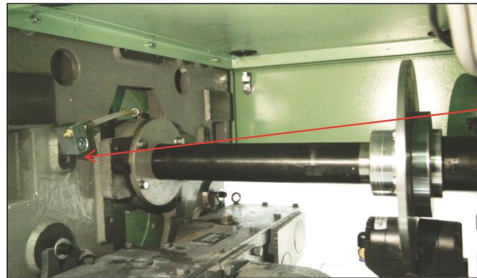
便捷灵活操作

TONG HE

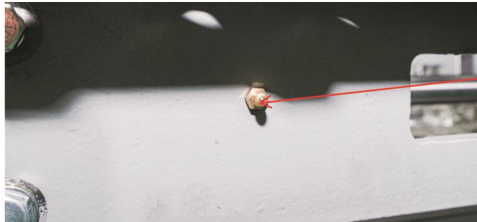
CONVENIENT AND FLEXIBLE OPERATION

- 采用多点集中加油，无需停机，设备维护更简单。

Adopting multi-point centralized refueling, no need to stop the ring frame, and equipment maintenance is much simpler.



油嘴
Lubricating Nipple



油嘴
Lubricating Nipple

- 自动预磨钢领，产量管理统计，管底成型程序可在显示屏上随时调取。

Automatic pre-grinding of ring cups, production management statistics, and bobbin bottom forming program could be retrieved at any time on the operation interface.



应用功能扩展



APPLICATION FUNCTION EXPANSION

- ★灵活的纺纱形式，可生产包芯纱、竹节纱、紧密纺、赛络紧密纺等。
★Flexible spinning forms which including core-spun yarn, slub yarn, compact spinning and siro compact spinning, etc.

- ★可和市场上任何一家可商业供货的络筒机联成络筒联型式，纱管在输送过程中无人手接触，既防止管纱受损又释放了人力。



★ It can be connected to any auto winder manufacturer on the market for link coner type. The yarn bobbins won't be touched by hands during the transportation, no any damage of the yarn & also releases manpower.

- ★可量身定制粗细联解决方案，适合所有纺纱厂排列条件以及不同的预算条件。粗纱输送系统降低了人工要求，以无人手接触管纱的输送方式实现快速的粗纱物流，保证纱线质量。
★customized bts solutions, suitable for all spinning mills' arrangement conditions and different budget conditions. BTS could reduce manual requirements and achieves fast roving logistics through unmanned hand contact, ensuring yarn quality.

- ★下吸棉自动收集风箱花系统，不需人工掏棉，降低劳动强度，提高细纱机自动化程度。
★Automatic waste collection of ring frame suction system, eliminating the need for manual working, reducing labor intensity, and improving the automation level of the ring frames.

- ★新二级能效节能电机（永磁同步电机），实现节能3%-5%。
★ New second-level energy-saving motor (permanent magnet synchronous motor), achieving energy saving of 3% -5%

注：所有带★内容为可选配置

Note: All contents marked with ★ are optional.

TH598 系列集聚纺细纱机

TH598 SERIES COMPACT SPINNING FRAME

精密生产智造

TONG HE

PRECISION PRODUCTION INTELLIGENT MANUFACTURE

细纱机的零件自制率达 70%，其中：

| | | | |
|---------|---------|----------|-----------|
| 罗拉 100% | 摇架 100% | 集聚纺 100% | 轴类 100% |
| 钣金 100% | 盘类 100% | 套类 100% | 铸件大件 100% |

The Self-Produced Parts Rate Reaches 70%, Mainly:

| | | | |
|--------------------|--------------|--------------|--------------|
| Bottom Roller 100% | Top Arm 100% | Compact 100% | Shafts 100% |
| Sheet Metal 100% | Disc 100% | Sleeve 100% | Casting 100% |



进口龙门中墙板自动生产线
Middle Wallboard Automatic Processing Line
(Imported Gantry Equipment)



进口龙门大铸件生产区
Large Castings Processing Area
(Imported Gantry Equipment)

TH598 系列集聚纺细纱机

TH598 SERIES COMPACT SPINNING FRAME

精密生产智造

TONG HE

PRECISION PRODUCTION INTELLIGENT MANUFACTURE



长向件自动生产线
Longitudinal Part Automatic Production Line



全自动喷漆生产线
Fully Automatic Powder Spray Line

TH598 系列集聚纺细纱机

TH598 SERIES COMPACT SPINNING FRAME

精密生产智造

TONG HE

PRECISION PRODUCTION INTELLIGENT MANUFACTURE



进口卧式加工中心
Imported Horizontal Machining
Center



进口立式加工中心
Imported Vertical Machining
Center



德国五面体加工中心
Pentahedron Machining Center

TH598 系列集聚纺细纱机

TH598 SERIES COMPACT SPINNING FRAME

精密生产智造

TONG HE

PRECISION PRODUCTION INTELLIGENT MANUFACTURE



日本激光切割机
Japan Laser Cutting Machine



德国激光切割机
Germany Laser Cutting Machine



自动折弯机
Automatic Bending Machine



日本数控冲床
Japan CNC Punching Machine



日本数控冲床
Japan CNC Punching Machine



日本钣金生产线
Japan Sheet Metal Production Line

TH598 系列集聚纺细纱机

TH598 SERIES COMPACT SPINNING FRAME

精密生产智造

TONG HE

PRECISION PRODUCTION INTELLIGENT MANUFACTURE



英国泰勒粗糙度轮廓仪
British Taylor Roughness Tester



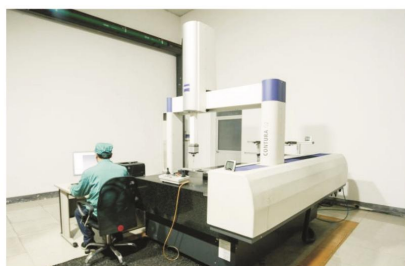
高精度影像测绘仪
High-Precision Image Mapper



英国泰勒圆度测试仪
British Taylor Roundness Tester



显微硬度计
Microhardness Tester



德国蔡司三坐标测量仪
Germany Zeiss Three-Coordinate Measuring
Instrument



万能工具显微镜
Universal Tool Microscope

TH598 系列集聚纺细纱机

TH598 SERIES COMPACT SPINNING FRAME

主要技术参数

TONG HE

MAIN TECHNICAL PARAMETERS

| | |
|--------------------------------------|---|
| 锭距 Spindle Gauge(mm) | 70 |
| 锭数 Spindle Qty. | 1008、1200、1632、1824 (常规锭数 Normal spindles) |
| 钢领直径 Ring Diameter(mm) | 35、36、38、40、42、45 |
| 筒管长度 Bobbin Length(mm) | 180、190、200、210 |
| 适纺线密度 Spun Yam Count(Tex) | 常规规格 16-120Ne Normal Supply: 16-120Ne |
| 适纺纤维 Spun Fiber | 棉、棉型化纤的纯纺或混纺 Cotton And Cotton Type Chemical Fiber |
| 牵伸型式 Drafting | 三罗拉, 每节 8 锭 Three-Line Bottom Roller. With 8 Spindles Per Staff |
| 集聚纺牵伸 compact drafting | 四罗拉, 网格圈, 每节 8 锭, 上短下长皮圈 Double Apron (Top Short And Bottom Long) |
| 牵伸倍数 Drafting Multiple | 10-120 常规锭数 Normal Supply |
| 锭子型式 Spindle Type | 铝套杆锭子 Aluminum Plug Type |
| 锭速 Spindle Speed (rpm) | 正常纺纱速度可达 23000rpm Normal Running Speed Could Be Up To 23000 Rpm |
| 锭子传动 Spindle Driving | 四锭式 Each Tape For 4 Spindles |
| 捻度 Twist (t/m) | 330 - 2800 |
| 捻向 Twist | Z 捻、S 捻、Z/S 捻 |
| 粗纱卷装 Roving Package(mm) | 135 × 320、152 × 406(max) |
| 主电机功率 Main Motor Power(kw) | 37、45、55、65、75、90 |
| 集聚纺负压风机功率 Compact Motor Power(kw) | 5.5、7.5、11、15 |
| 选配件 Optional Parts | 气圈环、清洁器、自动落纱、粗细联、细络联、理管箱 Balloon Ring, Ohtc. Auto-Doffing, Bts. Link Coner. Bobbin-Sorting Box |

TH598 系列集聚纺细纱机

TH598 SERIES COMPACT SPINNING FRAME

主要尺寸参数

TONG HE

MAIN DIMENSIONAL PARAMETERS

TH598 系列集聚纺细纱机地脚平面图

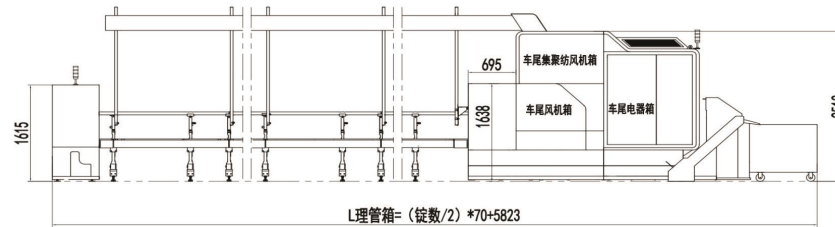
TH598 Series Compact Ring Spinning Frame Foundation Drawing

TH598 长车系列 (48 锭递增)

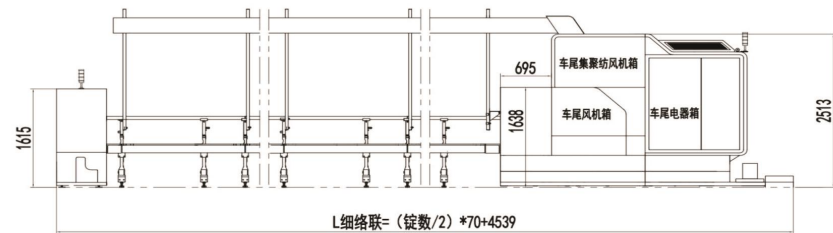
TH598 Long Ring Spinning Series (Increasing By 48 Spindles)

| | | | | | | | | | | |
|--------|-------|-------|-------|-------|-------|-------|-------|-------|-------|-------|
| 锭数 | 816 | 864 | 912 | 960 | 1008 | 1056 | 1104 | 1152 | 1200 | 1248 |
| 理管箱型 L | 34383 | 36063 | 37743 | 39423 | 41103 | 42783 | 44463 | 46143 | 47823 | 49503 |
| 细络联型 L | 33099 | 34779 | 36459 | 38139 | 39819 | 41499 | 43179 | 44859 | 46539 | 48219 |

(1) 全自动理管箱 Bobbin Sorting Box Type



(2) 细络联 Link Coner Type



TH598 系列集聚纺细纱机

TH598 SERIES COMPACT SPINNING FRAME

主要尺寸参数

TONG HE

MAIN DIMENSIONAL PARAMETERS

TH598 系列集聚纺细纱机地脚平面图

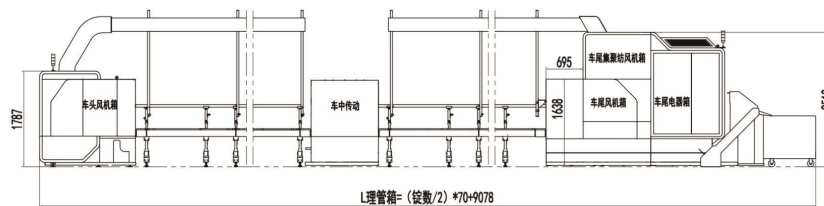
TH598 Series Compact Ring Spinning Frame Foundation Drawing

TH598 超长车系列 (48 锭递增)

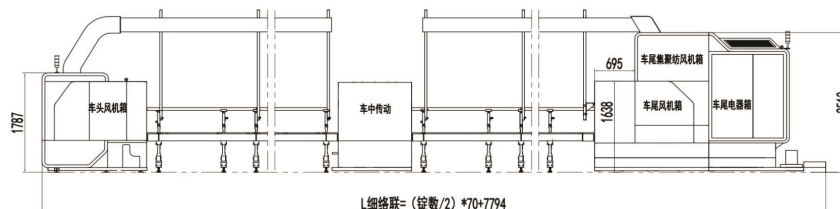
TH598 Super Long Ring Spinning Series (Increasing By 48 Spindles)

| 锭数 | 1440 | 1488 | 1536 | 1584 | 1632 | 1680 | 1728 | 1776 | 1824 |
|--------|-------|-------|-------|-------|-------|-------|-------|-------|-------|
| 理管箱型 L | 59478 | 61158 | 62838 | 64158 | 66198 | 67878 | 69558 | 71238 | 72918 |
| 细络联型 L | 58194 | 59874 | 61554 | 63234 | 64194 | 66594 | 68274 | 69954 | 71634 |

(1) 全自动理管箱 Bobbin Sorting Box Type



(2) 细络联 Link Coner Type



TH598 系列集聚纺细纱机
TH598 SERIES COMPACT SPINNING FRAME



TH598 系列集聚纺细纱机

TH598 SERIES COMPACT SPINNING FRAME



让全球纺织厂都爱上同和产品

LOVE TEXTILE, LOVE TONGHE

同和纺织机械制造有限公司

Tonghe Textile Machinery Manufacture Co., Ltd

地址：中国江苏常州经济开发区兴东路 198 号

Add: NO.198 Xing Dong Road Economic Development Zone,
ChangZhou City, Jiangsu, China

邮编 P. C: 213025

总机 Company: 86-519-88406666 86-519-88401388

营销部 Sales Dep : 86-519-88405688 86-519-88400578

传真 FAX: 86-519-88405666 86-519-88401618

电子信箱 E-MAIL: tonghesales@throller.com

网址 Website: //www.throller.com

技术参数如有变更，恕不另行通知

Technical parameters are subject to change without prior notice.

版权所有，侵权必究

All Rights Reserved.